



## 2020 OFFICERS & DIRECTORS

### *Executive Committee*

**Douglas C. Smith, Esq.**  
*Chair and President*

**Peter C. F. Fong, Esq.**  
*1st Vice President*

**Walton K. T. Shim**  
*2nd Vice President*

**Patricia Blanchette, MD, MPH, CMD**  
*Secretary*

**Dick I. Oshima, CPA**  
*Treasurer*

**Eric K. Watanabe, CPA**  
*Immediate Past President*

**Frances H. Goo**  
*Board Representative*

### *Directors*

**Gordon S. K. Au**  
**Peter Backus, CFA**  
**Anthony J.H. Ching**  
**Rena M. Hwang**  
**Russell J. Lau**  
**Roger K. S. Liu, CPA**  
**Gladys K. Lee**  
**Lenora Lee**  
**Lester K. M. Leu, Esq.**  
**Andrew M.O. Moats**  
**J. P. Schmidt, Esq.**  
**Gary Simon**  
**Tyler Tokioka**  
**Lawrence K. W. Tseu, DDS**  
**Gene Tsuji**  
**Benjamin Woo**  
**Reginald K.T. Yee, Esq.**

### *Directors Emeritus*

**Clinton K. L. Ching, Esq.**  
**Wesley F. Fong, Esq.**  
**Chew Nung Lum**  
**Albert Q. Y. Tom**

### *Chief Executive Officer*

**Darlene H. Nakayama, NHA**

### *Administrator*

**Darin Yoshimoto, NHA**

501 (c)3 Nonprofit  
Federal ID #99-0073521

## A MESSAGE FROM THE CEO | DARLENE NAKAYAMA

# STRENGTH THROUGH UNPRECEDENTED TIMES



The past few months have tested and challenged us, not just at Palolo Chinese Home but around Hawaii and the world. As COVID-19 drastically upends normal life as we know it, we continue to abide by our mission to provide better care for better lives while clinging to the hope and strength needed to get us through this unprecedented time.

Since COVID-19 first emerged, our staff has worked tirelessly to protect our residents and others in our ohana. Working closely with the Centers for Medicare & Medicaid Services (CMS), Centers for Disease Control and Prevention (CDC), and Hawaii's Department of Health (DOH), we recently made a number of precautionary changes to our operations. These included closing our Senior Day Care Center as of March 20 and cancelling our Home Cleaning Services as of March 27.

Please know that these decisions were not made lightly but for the health and wellness of our entire Hawaii

community and all those in our care. We firmly believe that these closures are essential to preventing the spread of COVID-19 in our community and getting Hawaii back up and running.

*"At the end of the day  
all you need is hope and  
strength. Hope that it will  
get better and strength to  
hold on until it does." –  
Jazmin Whitmore*

We are incredibly grateful to the many people in the local community who have stepped up to support us as we continue to care for Hawaii's kupuna. Victor Tan and his family, for example, recently donated medical face masks on behalf of Hawaii Asia Pacific Institute of Culture and Arts. With a deep sense of filial piety and love for family, the Tans chose to bless the seniors of PCH with these gifts. We are so thankful for people like the Tans who are inspiring us with their kindness and generosity during such a difficult time.

As we continue to do our part to prevent the transmission of respiratory disease and fight the COVID-19 pandemic, we thank you from the bottom of our hearts for your ongoing support. At the end of the day, we continue to hold on to hope and strength as we uplift and protect the most vulnerable in our community.



# HONORING THE LIFE AND LEGACY OF JUDGE ARTHUR S.K. FONG



Judge Arthur S.K. Fong lived a rich and fulfilling life, and had a significant impact on the lives of many Palolo Chinese Home residents and their families. The father of dedicated PCH Board Member Peter Fong, Judge Fong was born in Honolulu on December 5, 1924 and graduated from Saint Louis High School, where he received the prestigious Graduate of Distinction Award. While attending the University of Michigan, Fong met his future wife of 67 years, Victoria Kam Yuk Chun Fong.

Throughout his life, Fong was passionate about improving the local community for the people of Hawaii, evident in the many endeavors he undertook during his career. He served as an attorney in private practice; a Deputy Prosecuting Attorney; the First Deputy Attorney General for the State of Hawaii; and finally Judge of the Circuit Court of the First Circuit, where he served as

Administrative Judge and the Motions and Assignment Judge. He returned to private practice with son Peter under Fong & Fong—Attorneys-at-Law for 30 years until his passing.

An avid golfer and winner of numerous golf tournaments, Fong served as Honorary Chair of our Palolo Chinese Home Dynasty Invitational Golf Tournament. He will always be remembered for his love of sports, his active community involvement, and his love for and dedication to his family.



# PCH REMEMBERS PHYLLIS SHEA



As one of Palolo Chinese Home's longest-standing board members, Phyllis Shea was admired and well-respected among the Hawaii community for her generosity, determination and kind heart.

Born on October 2, 1940 in Honolulu to Edward and Dorothy Shea, Phyllis Shea graduated from Maryknoll High School and earned a Bachelor's Degree

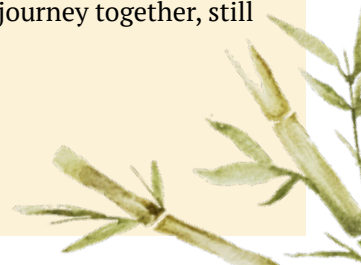
from Chaminade University. After becoming a Certified Public Accountant, Shea joined James Wong as a practicing accountant in 1962 before officially being named a partner in 1966. Rather than settling in her current position, she embarked on a new venture by founding her own company, Shea & Co., CPAs, in 1970.

In addition to serving as a PCH board member for XX years, Shea was also a board member of Sacred Hearts Academy and ARC of Hawaii, and a trustee for the Chaminade University Education Foundation, Lanakila Rehabilitation Center, Hawaii Community Scholarship Program and the Hawaii Tax Institute Foundation. Through her rich community involvement, Shea has demonstrated a heart for service, and will always be remembered for her work in the wider Hawaii community.



## Celebrating the Spirit in Caregiving

Author Gerry Yahata's storybook *The Spirit in Caregiving* illustrates the challenges and the triumphs of caring for a loved one. A devoted son, Gerry took an early retirement from the University of Hawaii to become his mother's caregiver when she developed dementia. He found joy in writing children's storybooks, and his personal caregiving journey inspired both his craft and his outreach to the community through workshops. He often visited the residents of Palolo Chinese Home to talk story and share a smile. Gerry also reminded caregivers through both humor and compassion that it's not about being Superman. "If can, can, if no can, NO CAN." Gerry's mother recently passed this year, yet the spirit of their special relationship, love, and their journey together, still carries on and inspires.







# CARING FOR OUR PCH OHANA AMIDST COVID-19



In response to the significant strain that COVID-19 is placing on the local community, we're proud to provide free meals daily to our 190 employees while they're on shift. We've also unveiled an onsite farmers' market, where staff can purchase fresh fruit and vegetables while avoiding the increasingly long lines and empty shelves at stores.

In addition to offering team meals that are prepared by talented chefs in our onsite kitchen, we're further supporting neighboring restaurants by alternating these meals with to-go menu options from L&L Hawaiian BBQ, Papa Johns and more.

"Our team has been working tirelessly to care for our senior community during this particularly challenging time," said Palolo Chinese Home CEO, Darlene Nakayama. "We hope by providing these meals, we will ease some of the stress they are facing. We also recognize that their

shifts are often ending at times when markets have yet to be restocked—so we'll be bringing the marketplace to our employees instead."

PCH HR Manager Lauren Kagihara also recognized the value of supporting one another during this difficult time. "From our operations team, to our RNs, to our administrative staff staying late to assist with dinner service for our residents, our team has risen to the occasion in supporting each other and the needs of our kupuna around the clock. As we all do our part with social distancing wherever possible, we hope this gesture lets our employees, as well as the great people at our nearby businesses, know that we are in this together."



## PCH UPDATES IN RESPONSE TO COVID-19

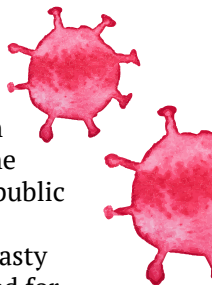
In order to protect our residents and staff and do our part to prevent the spread of COVID-19 in the community, we have cancelled our Home Cleaning Services and closed our Senior Day Care Center for an undetermined amount of time.

We understand these changes will be difficult for families and urge you to make alternative arrangements sooner rather than later to minimize the inconvenience. Should you need in-home services in the interim, please contact Aiza Pobre, Senior Day Care & Meals-to-Go manager at (808) 748-4909 for assistance with services provided through our Palolo Wellness Program.

Thank you for your cooperation and understanding as we work together to keep our residents and the local community safe.

### *Postponed Events*

Given the COVID-19 concerns and in keeping with preventative guidelines from the CDC, we made the decision to temporarily postpone our on-campus public events, including the ongoing community speaker series. We've also postponed our 30th Annual Dynasty Invitational Golf Tournament, previously scheduled for Friday, May 8. Our golf tournament has been rescheduled to Friday, November 13, 2020 at the Ala wai Golf Course. We hope you can join us. Mahalo for your kokua and understanding.





**PALOLO CHINESE HOME**  
Better Care. Better Lives

2459 I0th Avenue . Honolulu, Hawaii  
96816-3051 Phone: (808) 748-4904 .  
Fax: (808) 748-4916  
E-Mail: [info@palolohome.org](mailto:info@palolohome.org)  
Website: [www.palolohome.org](http://www.palolohome.org)  
Federal Tax ID# 99-0073521

NON PROFIT ORG.  
US POSTAGE PAID  
PERMIT NO. 928  
HONOLULU, HI

*The blessing of “long life” is universally celebrated. At Palolo Chinese Home, the Chinese character for longevity (shou) has long been used as our symbol. By adding two brush strokes, the artist, the late Clarence Lee, incorporated the Chinese character for people or mankind (ren), and the result is an image of a roof embracing long life — our wish for you. The unbroken circle signifies our mission of continuous care and respect for our kupuna (elders).*

MAY 2020



## SUPPORTING PCH AMIDST A GLOBAL PANDEMIC



There's no denying that the past few months have created a temporary new normal. From mandated stay-at-home orders to global travel restrictions to social distancing, so many things about our daily lives have changed. What's stayed the same, however, is our commitment at Palolo Chinese Home to provide the best care for Hawaii's seniors.

For over 120 years, Palolo Chinese Home has remained true to our mission to educate, support, and care for seniors and their families by providing a continuum of quality care in a culturally sensitive family setting. Recognizing the need for a permanent home to provide care and housing for the “aged and infirm,” a group of Hawaii's Chinese community leaders banded together to found Palolo Chinese Home in 1896. Ever

since, we've worked hard to provide seniors of all ethnicities with care from competent and compassionate professionals at our home in tranquil Palolo Valley.

In this time of great uncertainty and unrest, we humbly ask for your continued support as we maintain our promise of quality care. Although we recently closed our Senior Day Care Center and cancelled our Home Cleaning Services out of an abundance of caution and to prevent the spread of COVID-19, we continue to care for our residents in a safe and healthy environment. And that's why we need your help.

As the coronavirus continues to affect the entire population, but particularly the seniors who are most susceptible to the virus, we see now more than ever the importance of



caring for our kupuna at all times, not just during a pandemic. If you recently lost someone special, we invite you to consider making a gift to PCH in memory of your loved one. No matter the size of the gift, you're directly supporting our ongoing efforts to care for Hawaii's growing senior population, the most vulnerable community during the COVID-19 crisis. Thank you for your consideration and your support as we all work together to keep our cherished kupuna safe.